

Ricoh Aficio MP 3500/MP 4500 Series
B/W Multifunctional Systems
High-Performance Functionality

RICOH



fast



flexible



productive



Ricoh Aficio MP 3500/MP 4500 Series

MFP for the Value-driven Office

You need efficient, reliable office systems that put busy workgroups in control of an ever-increasing volume of documents—correspondence, financial reports, contracts and presentations.

Offering exceptional performance to meet these demands, the versatile RICOH® Aficio® MP 3500/MP 4500 digital systems support advanced network printing, scanning and faxing in one compact platform. And our industry-leading security technology protects your vital business information at every stage.



FastFlexibleUnmatchedIntuitive

Capture, Store and Distribute

For fast, convenient communication with colleagues, clients and customers, scan your documents to your desktop, network folder, e-mail or URL. For network-based information sharing and distribution, the TWAIN compliant Ricoh Aficio MP 3500/MP 4500 Series is ahead of the curve.

- Scan-to-Email—Easily search and send electronic documents for timely and accurate delivery with LDAP.
- Scan-to-Folder—Ideal way to archive and share large files with multiple clients.
- Support for common file formats (PDF, TIFF and JPEG) provides compatibility between varied operating systems and application software.

Network Printing MFP for the Value-driven Office

The 466 MHz processor and 384 MB memory accelerate print performance, producing general-office documents with ease.

- For out-of-box network connectivity and fast data-transfer rates, the Ricoh Aficio MP 3500/MP 4500 Series is equipped with 10/100BaseTX Ethernet and USB 2.0 interfaces.
- You're in complete control of print output with Ricoh's innovative RPCS (Refined Printing Command Stream), PCL5e/6 and optional Adobe® PostScript® 3™ page description languages.
- Full compatibility with today's common platforms—Windows, Macintosh, AS/400, Linux and UNIX—ensures seamless integration in virtually any environment.
- PDF Direct Print lets you send PDF files directly to a printer without even opening the application, reducing network traffic and raising productivity. Ideal for printing scanned PDFs.

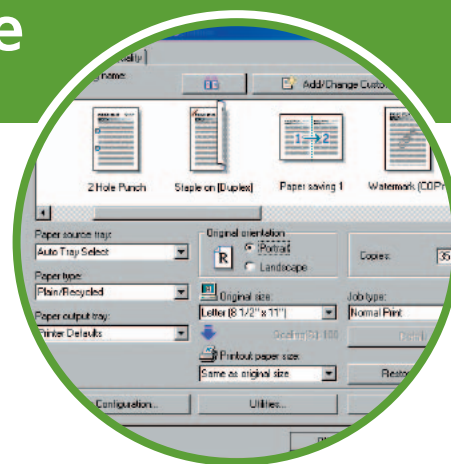
Manage Documents with Confidence

Leverage the power of the Ricoh Aficio MP 3500/MP 4500 Series Document Server as a virtual document library for archival and print on-demand applications. Retrieved documents can be reprinted, refaxed, rescanned or downloaded to your computer for editing.

Rein In Expenses and Speed Communications with Innovative Fax Technology

With a wide range of advanced fax communication features available, the Ricoh Aficio MP 3500/MP 4500 Series offers busy workgroups walk-up and desktop faxing convenience and economy.

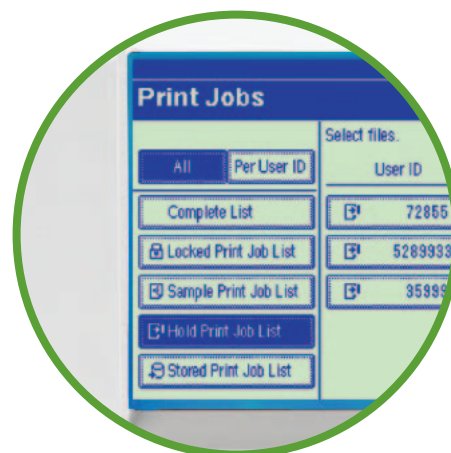
- Quickly deliver e-mail or hard copy via Internet Fax and IP Fax, functions that decrease operating costs by eliminating long-distance charges.
- Efficiently send electronic documents to a remote fax machine via LAN Fax, conveniently from your PC.
- The Ricoh Aficio MP 3500/MP 4500 Series provides traditional walk-up faxing via the high-speed 33.6 Kbps modem with standard JBIG compression. For maximum send/receive throughput, add up to two additional fax lines.
- Forward faxes directly to e-mail, hard disk or folder, ensuring that documents are properly routed.



RPCS is an easy-to-use, icon-based print driver that enables you to apply and save special settings, including duplexing and finishing, for one-click job processing.



Scan-to-URL improves information sharing in your organization, while minimizing network traffic.



Files can be password protected and held in memory until released by the owner for increased security. You can even print and delete multiple documents in a single operation.

FaxPrintScanNetworkE-mail

Install, Manage and Monitor with Ease

Ricoh's comprehensive suite of utilities smooths daily system monitoring and simplifies installation.

- Web Image Monitor enables you to set output parameters, check the status of toner and paper, and even reset the system from your desktop—all from your Web browser.
- On-demand Status E-mail Notification enables IT to remotely query the device for important system reports.
- With Auto E-mail Notification, the Ricoh Aficio MP 3500/MP 4500 Series sends a report to a designated e-mail address if, for instance, paper is low or out, to maximize uptime.

Safeguard Network and Information Assets

The Ricoh Aficio MP 3500/MP 4500 Series advanced security solutions help safeguard your network and the information it carries at all stages—input, management and output.

- Use Windows/LDAP Authentication with your existing network login infrastructure to ensure that only those with a valid user name and password can access system functions.
- Deter photocopying of confidential documents with Unauthorized Copy Control, a requirement for any office responsible for creating and distributing restricted information.
- Protect temporary data stored on the hard drive with the Ricoh DataOverwriteSecurity System. Latent copy, print, scan, fax or Document Server file data is overwritten, making any effort to access and reconstruct residual data virtually impossible.
- With the Ricoh Removable Hard Drive, the Ricoh Aficio MP 3500/MP 4500 Series' hard drive can be removed and stored in a secure location.

Anytime, Anywhere Document Retrieval

documentmall

The Ricoh DocumentMall™ is powerful document management software that is delivered as an on-demand service over the Internet. Seamless integration with the Ricoh Aficio MP 3500/MP 4500 Series allows you to upload scanned documents directly to DocumentMall™ and store critical documents in one secure location; manage documents online from the convenience of a PC; share documents with anyone at anytime; and protect documents with state-of-the-art security and facilities. DocumentMall™ addresses a wide range of document management needs—from simple document archiving and disaster readiness, to global sharing and collaboration.

Open Architecture

The Ricoh Embedded Software Architecture—an innovative Java (J2ME)-compatible software development platform—allows third-party development of key applications that run on the Ricoh Aficio MP 3500/MP 4500 Series, dramatically enhancing your organization's workflow. The Ricoh Aficio MP 3500/MP 4500 Series can easily be customized to meet your needs by controlling features such as the operation panel, printing, saving files and scanning.



Your Environmental Partner

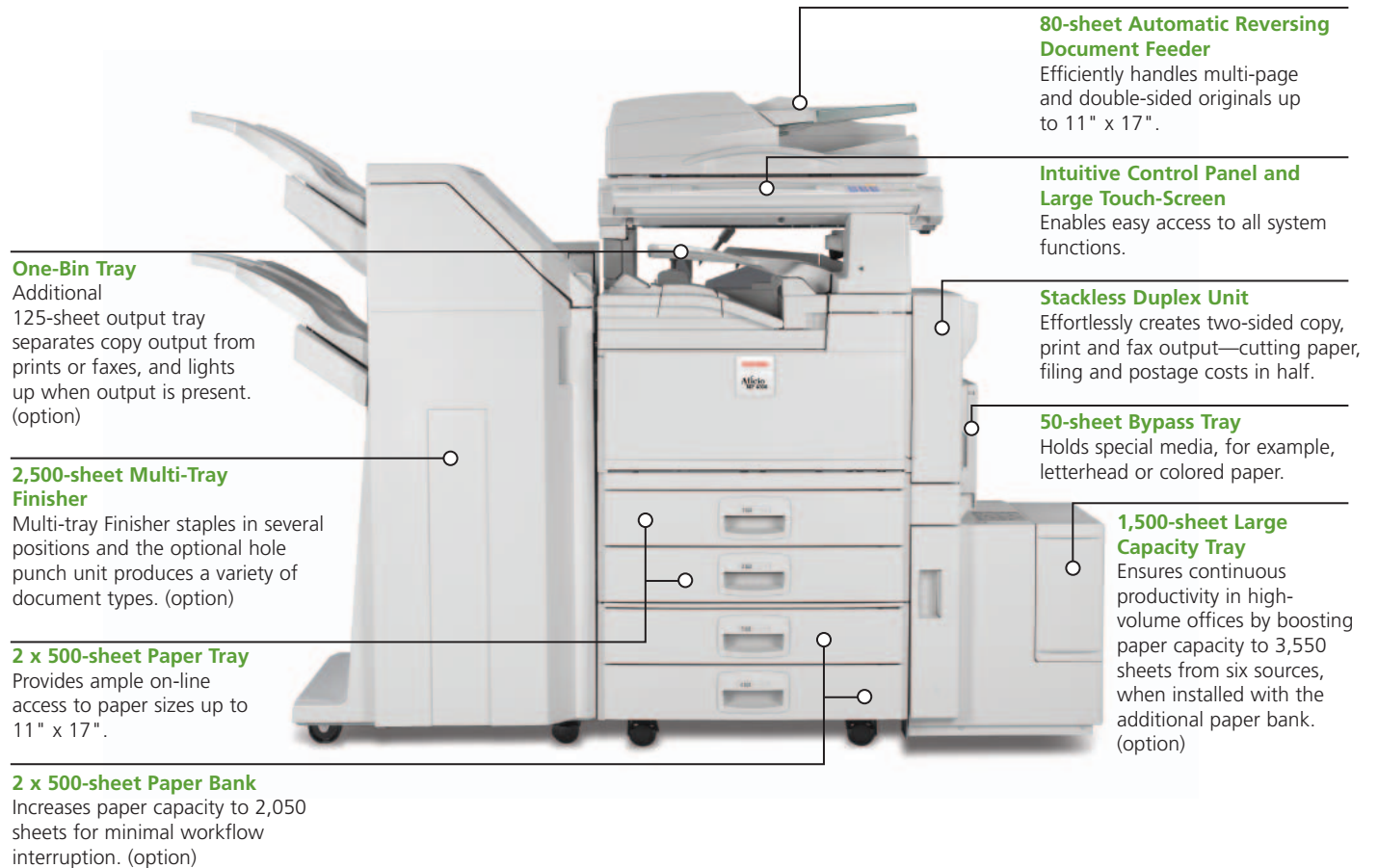


Ricoh continues its long-standing commitment to developing office solutions with environmentally-friendly and superior energy- and supply-saving features, without compromising productivity, including:

- Quick Start-Up (QSU) Technology
- Power-saving Sleep Mode
- Duplex and Combine Copy Modes
- Internal Toner Recycling Mechanism
- Low Noise Levels
- Minimal Ozone Emissions
- RoHS (Restriction of Hazardous Substances) Compliant

Advanced Systems, that Deliver

Productivity soars with rapid 35/45 ppm and fast first-copy speeds as the Ricoh Aficio MP 3500/MP 4500 Series effortlessly outputs your most complex jobs.



Select the Configuration based on the requirements for your office



For an affordable printing solution with a flexible upgrade path for scanning and faxing



For productive printing and document handling



For total document needs in a space-saving design



For secure document storage, management and distribution via the Internet

Ricoh Aficio MP 3500/MP 4500 Series

System Specifications

Aficio[®]

Engine/Copier Specifications

Configuration	Console
Scanning Element	Flatbed with Moving CCD Array Image Sensor
Printing Process	Twin Laser Beam Scanning & Electrophotographic printing Dry, Dual Component
Toner	128/384 MB RAM
System Memory (std./max.)	40 GB standard
Hard Disk Drive	Standard 80-sheet ARDF
Document Feeder	600 x 600 dpi
Copy Resolution	256 levels
Grayscale	Manual & Automatic
Exposure Adjustment	Up to 999
Quantity Indicator	Book/Sheet
Original Type	Up to 11" x 17"
Maximum Original Size	5.5" x 8.5" to 11" x 17"
Copy Size	Plain Paper, Transparencies
Copy Type	MP 3500: 15 seconds MP 4500: 20 seconds
Warm-Up Time	MP 3500: 4.3 seconds MP 4500: 3.6 seconds
First Copy Speed	MP 3500: 35 copies/minute (LTR) MP 4500: 45 copies/minute (LTR)
Continuous Copying Speed	MP 3500: 20 seconds MP 4500: 15 seconds
Recovery Time (from Auto Off)	120V/60Hz/15A
Power Source	26.5" (W) x 34" (H) x 26" (D)
Dimensions	205 lbs.
Weight	500 sheets x 2 trays 50-sheet Bypass Tray
Standard Paper Capacity	500 sheets x 2 trays 1,500-sheet Large Capacity Tray (LCT)
Optional Paper Capacity	5.5" x 8.5" to 11" x 17" 20 to 28 lb. Bond/64 to 105g/m ² (Trays 1 & 2) 16 to 44 lb. Bond/52 to 163g/m ² (Bypass) 20 to 28 lb. Bond/64 to 105g/m ² (Duplex) 500 sheets (8.5" x 11")
Paper Size	
Paper Weight	
Standard Output Tray Capacity	
Capacity	
Reduction Ratios	25%, 50%, 65%, 73%, 78%, 85%, 93%
Enlargement Ratios	121%, 129%, 155%, 200%, 400%
Zoom	25% to 400% in 1% increments
Standard Features	Auto Magnification, Auto Paper Select, Auto Tray Switch, Background Numbering, Booklet/Magazine Copy, Center/Border Erase, Combine Mode, Cover Insertion, Date Stamp, Directional Magnification, Document Server (3,000 file capacity), Electronic/Rotate Sorting, 10 Job Programs, Negative/Positive, OHP Slip Sheet, Page Number Stamp, Paper Designate, Series Copy, Pre-Set and User Stamps, Touch-Screen Control Panel, 100 User Codes (optional 500 max.)

Scanner Specifications (Option)

Scanning Speed	Embedded Scanning 52 ipm (@ 200 dpi)
Scanning Resolution	600 dpi
Grayscale	256 Levels
Scan Area	Up to 11" x 17"
Standard Interfaces	10/100BaseTX Ethernet
Optional Interfaces	IEEE 802.11b Wireless LAN
Protocol	TCP/IP, SMTP, SMB, FTP, IPX, POP3, NCP, SNMP
Memory Capacity	384 MB Shared
File Formats	Single Page TIFF, JPEG, PDF, Multi-Page TIFF, PDF
Standard Features	Embedded Scan-to-Email, HDD, Folder, URL and TWAIN

Printer Specifications (Option)

Print Speed	MP 3500: 35 ppm MP 4500: 45 ppm
CPU	RM7035C 466 MHz
Standard Interfaces	10/100BaseTX Ethernet, USB 2.0
Optional Interfaces	IEEE 802.11b Wireless LAN Bluetooth IEEE 1284
Memory Capacity	384 MB Shared
Network Protocol	TCP/IP, IPX/SPX, AppleTalk
Network Operating Systems	Windows 9x/NT4.0/2000/ME/XP/Server 2003, Netware, UNIX, Sun Solaris, HP-UX, SCO OpenServer, Red Hat Linux, IBM AIX, Mac 8.6 - 9.2x, 10.1+, SAP R/3, NDPS Gateway, IBM iSeries/AS/400 [®] using OS/400 Host Print Transform SmartDeviceMonitor, Web Image Monitor, Web SmartDeviceMonitor, DeskTopBinder V2 Lite
Utilities	PCL 5e/6 emulation* Ricoh RPCS Adobe PostScript 3 (optional)
Page Description Languages	Up to 600 dpi (2400 x 600 dpi with smoothing)
Print Resolution	35 Intellifonts, 10 TrueType Fonts, 1 Bitmap, 13 International Fonts
Fonts for PCL 5e/6	136 PostScript Fonts
Fonts for PS3	Form Overlay, Watermarks, Spool Printing, Sample/Locked/Hold/ Stored Print, Encryption
Standard Features	

Fax Specifications (Option)

Circuit	PSTN, PBX
Compatibility	ITU-T G3
Resolution	200 x 200/100 dpi 400 x 400 dpi (optional)
Compression Method	MH, MR, MMR, JBIG
Scanning Speed	0.43 seconds (LEF)
Modem Speed	33.6 Kbps with Auto fallback
Transmission Speed	G3: 3 seconds per page (MIMR Compression) G3: 2 seconds per page (JBIG Compression)
Memory	4 MB standard (320 pages) 28 MB maximum (2,240 pages)
Memory Backup	1 hour
Auto Dials	2,000
Group Dials	100 (max. 500 numbers per group)
ID Code Programming	4 digits
User Function Key	3 keys
Standard Features	Auto Document (6), Book Transmission, Dual Access, Duplex Reception, Image Rotation
Optional Features	Simultaneous operation of up to 3 lines (G3 x 3); LAN-Fax Capability, Internet Faxing (T.37), IP Faxing (T.38), Fax Forwarding to E-mail/HDD/Folder with Scan/Print Installed

PS530 Paper Bank (Option)

Paper Size	5.5" x 8.5" to 11" x 17" A5 to A3
Paper Weight	20 to 28 lb. Bond/60 to 105g/m ²
Paper Capacity	2 x 500 sheets
Dimensions	21.3" (W) x 23.6" (D) x 10.6" (H)

RT45 Large Capacity Tray (Option)

Paper Size	8.5" x 11"/A4
Paper Weight	20 to 28 lb. Bond/60 to 105g/m ²
Paper Capacity	1,500 sheets
Dimensions	15.4" (W) x 19.7" (D) x 15.4" (H)

One-Bin Tray PT330 (Option)

Paper Size	5.5" x 8.5" to 11" x 17" A5 to A3
-------------------	--------------------------------------

Paper Weight	16 to 28 lb. Bond/60 to 105g/m ²
Paper Capacity	125 sheets

SR790 Finisher (Option)

Paper Size	5.5" x 8.5" to 11" x 17"/ A6 to A3
Paper Weight	16 to 42 lb. Bond/60 to 157g/m ²
Stack Capacity	Proof Tray: 250 sheets (8.5" x 11" or smaller); 50 sheets (8.5" x 14" or larger) Shift Tray: 1,000 sheets (8.5" x 11" or smaller); 500 sheets (8.5" x 14" or larger)
Staple Capacity	50 sheets (8.5" x 11"); 30 sheets (8.5" x 14" or larger)
Staple Position	3 positions (1 staple/2 positions; 2 staples/1 position)
Dimensions	20.7" (W) x 20.5" (D) x 31.1" (H)

SR880 Multi-Tray Finisher (Option)

Paper Size	5.5" x 8.5" to 11" x 17"/ A6 to A3
Paper Weight	14 to 43 lb. Bond/52 to 163g/m ²
Stack Capacity	Upper Tray: 500 sheets (8.5" x 11"); 250 sheets (8.5" x 14" or larger); 100 sheets (5.5" x 8.5") Lower Tray: 2,000 sheets (8.5" x 11"); 100 sheets (5.5" x 8.5"); 750 sheets (8.5" x 14" or larger)
Staple Capacity	50 sheets (8.5" x 11"); 30 sheets (8.5" x 14" or larger)
Staple Position	4 positions (1 staple/3 positions; 2 staples/1 position)
Dimensions	26.8" (W) x 24.4" (D) x 40.6" (H)

SR890 Booklet Finisher (Option)

Paper Size	5.5" x 8.5" to 11" x 17"/ A5 to A3
Paper Weight	14 to 43 lb. Bond/52 to 163g/m ²
Stack Capacity	Upper Tray: 150 sheets (8.5" x 11" or smaller); 75 sheets (8.5" x 14" or larger) Lower Tray: 1,000 sheets (8.5" x 11" or smaller); 500 sheets (8.5" x 14" or larger)
Staple Capacity	50 sheets (8.5" x 11" or smaller); 30 sheets (8.5" x 14" or larger)
Booklet Tray Capacity	10 sets (11 to 15 sheets) 15 sets (6 to 10 sheets) 25 sets (less than 5 sheets)
Booklet Staple Capacity	15 sheets
Booklet Staple Position	4 positions (1 staple/2 positions; 2 staples/2 positions; plus saddle stitch)
Dimensions	27.1" (W) x 24.5" (D) x 41.5" (H)

2/3 Hole Punch Kit Type 1045 (Option)

Paper Weight	14 to 43 lb. Bond/52 to 163g/m ²
Application	For SR880 Multi-tray Finisher only

Additional Options

Bridge Unit Type 2045, Scanner Accessibility Option Type 3045, Fax Type 3045, Handset Type 450, G3 Interface Type 3045, Removable Hard Drive Type 3045, Additional Removable Hard Drive Type 3045, Printer/Scanner Unit Type 4500, PostScript Type 4500, Key Counter Bracket Type H, DOSS Type D, File Format Converter Type B, Copy Data Security Unit Type A, FAC25 Cabinet, 32 MB Fax Memory, User Account Enhancement Kit Type E, IEEE 1284 Interface Board Type A, Bluetooth Interface Unit Type 3245, IEEE 802.11b Interface Unit Type H, Network Enhancement Kit Type 4500P, VM Card Type B

*Option for Ricoh MP 3500P/MP 4500P configurations.

RICOH

www.ricoh-usa.com

Ricoh Corporation, Five Dedrick Place, West Caldwell, NJ 07080

Ricoh[®] and the Ricoh Logo are registered trademarks of Ricoh Company, Ltd. Windows[®] and Windows[®] 95/98/Me/NT4.0/2000/XP are registered trademarks of Microsoft Corporation. Macintosh[®], Mac OS and AppleTalk[®] are registered trademarks of Apple Computer, Inc. Adobe[®] and PostScript[®] are registered trademarks of Adobe Systems, Inc. PCL[®] is a registered trademark of Hewlett-Packard Company. RPCS[™] is a trademark of Ricoh Company, Ltd. All other trademarks are the property of their respective owners. Printed in U.S.A. on recycled paper. Print speed may be affected by network, application or PC performance. Specifications and external appearances are subject to change without notice. Products are shown with optional features.

♻️ Printed in U.S.A. on recycled paper because Ricoh cares.



CA-0564